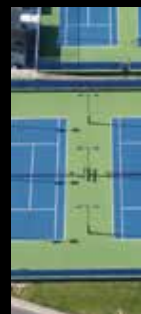




Tennis Equipment Catalog



5661 Brownfields Drive | Baton Rouge, LA 70811
855-774-9974 | info@qualitycourt.com | www.qualitycourt.com



Court Nets and Accessories

CONSISTENT QUALITY:

With Douglas® nets, you get consistent, long-lasting performance. All Douglas® nets meet USTA or USAPA's requirements for official net sizes. In addition, Douglas® nets carry a pro-rated warranty guaranteeing superior durability and longer net life. See for yourself why Douglas® nets are the brand of choice. All nets include lacing cord. Center straps are sold separately.

NETTING:

Netting is 1-3/4" square mesh braided solid core polyethylene unsurpassed for durability and weather resistance. Nets are made from 3.5mm with 325# break strength or from 3.0mm with 285# break strength.

HEADBANDS:

Headbands are constructed using heavy-duty vinyl coated polyester or durable polyester webbing material that withstands the elements and won't shrink, rot or mold. Headbands are sewn to the netting with four rows of #32 white polyester thread -the heaviest in the industry.

BOTTOM/SIDE POCKET TAPES:

Bottom and side pocket tapes are made of heavy-duty vinyl coated polyester and won't shrink, mildew or rot when exposed to the elements. The included 1/2" fiberglass dowels in the side pockets keep the net taut for a professional appearance. Heavy duty brass grommets and lacing cord lets you pull the net snugly up to each post.

CABLE:

All Douglas® nets come complete with a vinyl coated, 5/32" galvanized steel cable with break strength of 2300#. Both ends have double-swaged loops.

OPTIONS:

Some tennis nets have double netting on the top five rows. This allows for increased durability of the net since the top rows are the area of the net that tennis balls hit the most leading to net fatigue. Tapered nets are also available, nets are tapered in the middle for a cleaner look and increased durability.



		Headband		Netting			
Item #	Net	Material	Weight	Size	Break Strength	Top 5 Rows Double Mesh	Warranty
PROFESSIONAL TENNIS NETS - - - USA Manufactured by Douglas® - - -							
20045	TN-45	Double thick 100% polyester	48 oz	3.5 mm	325 lb.	No	5 Year Warranty
CHAMPIONSHIP TENNIS NETS							
30036T	TN-36 -tapered	Vinyl Coated Polyester, 2-ply	65 oz. (20 oz./sq. yd.)	3.5 mm	325 lb.	No	5 Year Warranty
30038TD	TN-36DMT -tapered	Vinyl Coated Polyester, 2-ply	65 oz. (20 oz./sq. yd.)	3.5 mm	325 lb.	Yes	5 Year Warranty
30060	TN-28DM	Durable Polyester Web	N/A	3.5 mm	325 lb.	Yes	5 Year Warranty
TOURNAMENT TENNIS NETS							
30029	TN-30	Vinyl Coated Polyester	32 oz./sq. yd.	3.0 mm	285 lb.	No	4 Year Warranty
30030	TN-30DM -tapered	Vinyl Coated Polyester, 2-ply	65 oz. (20 oz./sq. yd.)	3.0 mm	285 lb.	Yes	4 Year Warranty
SPECIALTY TENNIS NETS							
20305	STN-36, 42" x 32'9"L Singles Tennis Net	Vinyl Coated Polyester, 2-ply	65 oz. (20 oz./sq. yd.)	3.0 mm	285 lb.	No	4 Year Warranty
20008	PTN-28, 32" x 21'10" Paddle Tennis Net	Vinyl Coated Polyester, 2-ply	65 oz. (20 oz./sq. yd.)	3.0 mm	285 lb.	No	4 Year Warranty
20009	PLTN-28, 36" x 23' Platform Tennis Net	Vinyl Coated Polyester, 2-ply	65 oz. (20 oz./sq. yd.)	3.0 mm	285 lb.	No	4 Year Warranty
PICKLEBALL NETS							
20105	JTN-30, 36" x 21'9"L Standard Pickleball	Vinyl Coated Polyester, 2-ply	65 oz. (20 oz./sq. yd.)	3.0 mm	285 lb.	No	4 Year Warranty
20103	PN-30, 31" x 21'9"L Shorter Pickleball Height	Vinyl Coated Polyester, 2-ply	65 oz. (20 oz./sq. yd.)	3.0 mm	285 lb.	No	4 Year Warranty
BOTTOM TAPER OPTION							
20062	All tennis nets can be bottom fit by tapering the 42" end to 36" at center. This reduces the amount the net rubs on the court surface prolonging the life of the net.						



TN-30 | Deluxe Center Strap



TN-36DMT



TN-45



TN-36

○ Adjustable Center Straps

All straps are made from heavy-duty 2" polyester white webbing, nickel plated web slides and snaps.

Velcro (Item # 20601)

Velcro adjustment, with swivel loop bolt snap

Classic (Item # 20603)

Non-slip reverse web slide with double ended snap

Deluxe (Item # 20600)

Two non-slip reverse web slides with swivel loop bolt snap

Center Pipe Anchor
(Item # 63428)

1.9" OD Galvanized Steel



○ Replacement Accessories

○ Replacement Cables

1/4" Galvanized steel cable is vinyl coated and looped each end.

47' Tennis Cable (RVC-47) (Item # 20647)

27' Pickleball Cable (RVC-27) (Item # 20627)



○ Lacing Cord

(TNLC) (Item # 10338)

Tennis net lacing cord includes (2) pieces of 4 mm white polyester braided cord 4' long and (2) pieces 3 mm braided polyethylene 15' long.

Cord 3 mm (Item # 10337)

500' spool of 3 mm braided polyethylene



○ Replacement Snaps

Loop Snap (Item # 10601)

2" replacement loop snap

Double Snap (Item # 10604)

Double ended bolt replacement snap

○ Singles Sticks

(Item # 34753)

Single sticks provide proper 42" net height for singles play. These silver singles sticks are made from 3/4" aluminum with protective end caps and injection-molded "V" groove for the net headband. Sold per pair.



Tennis Posts



○ Douglas® Premier™ XS Posts

Plated Gears	Green (Item # 63032)
	Black (Item # 63034)
	Open Blue (Item # 63033)
Stainless Steel Gears	Green (Item # 63032SS)
	Black (Item # 63034SS)
Brass Gears	Green (Item # 63032BR)
	Black (Item # 63034BR)

2 1/8"



The Premier™ XS Series is the Cadillac of tennis posts; providing first-class looks and durability for both indoor and outdoor court applications.

These 2-7/8" OD round posts are constructed of 8-gauge steel. Posts feature Allied's® superior Flo-coat® galvanization process and are then finished in forest green, black or open tournament blue baked-on polyester powder coat to resist rust and increase durability. Integrated welded steel lacing rods are included for a professional net installation.

Posts are internally wound and feature a jam-free cable tensioning hardware system. Choose from plated steel, stainless steel or brass gears. Gear housings and caps are made of die-cast zinc. Gear function is 30:1 to ensure a smooth, easy operation. Flush mounted gear plate cover and removable handle are offered in chrome or brass finish.

Corresponding Ground Sleeves:

24" PVC Ground Sleeve (GS-24PVC) (Item # 63164)

24" Aluminum Ground Sleeve (GS-24RD) (Item # 63171)



○ Douglas® DTP-37

Green (item # 63007)
Black (item # 63008)

These 3" OD posts are comprised of extra-heavy 7-gauge steel. Posts are internally wound and feature a self-locking gear mechanism. Gears are constructed of plated steel and the small gear is case hardened. Gear function is 30:1 to ensure a smooth, easy operation. The sleek gear housing and caps are made of cast aluminum alloy. Posts are finished in forest green or black baked-on polyester powder coat finish to resist rust and increase durability. Integrated welded steel lacing rods are included for a professional net installation. The side mounted removable handle is chrome plated.

3"

The dependable DTP-37 post is a sturdy design that has been a tennis court staple for decades.



Corresponding Ground Sleeves:
24" Steel (GS-24) (Item # 63424)



○ Douglas® Sidewinder

2-7/8" Green (Item # 63001)
Black (Item # 63003)

3-1/2" Green (Item # 63005)
Black (Item # 63005B)

2 1/8" 3 1/2"

These recreational workhorse posts are designed for tough wear making them ideal for parks or school tennis courts.

These classic external wind posts are constructed of 8 gauge steel in either 2-7/8" or 3-1/2" OD. The posts, external gears and handle are finished in forest green or black baked-on polyester powder coat finish to resist rust and increase durability. Integrated welded steel lacing rods are included for a professional net installation. The aluminum deluxe reel offers a smooth adjusting operation with a side mounted removable handle.



Corresponding Ground Sleeves:

2-7/8"

24" PVC (GS-24PVC) (Item # 63164)

24" Aluminum (GS-24RD) (Item # 63171)

3-1/2"

24" Steel (GS-24) (Item # 63174)



○ Premier™ RD
Green (Item # 63050)
Black (Item # 63051)

3"

Premier™ SQ
Green (item # 63053)
Black (item # 63054)

3"

These popular posts provide classic good looks and durability for either indoor or outdoor court applications.

The Premier™ 3" OD round (RD) and 3" square (SQ) posts are constructed of heavy-duty 11-gauge steel. Posts are internally wound and feature a self-locking gear mechanism. Gears are constructed of plated steel and the small gear is case hardened. Gear housings and caps are made of cast aluminum alloy. Gear function is 30:1 to ensure a smooth, easy operation. Posts are finished in forest green or black baked-on polyester powder coat finish to resist rust and increase durability. Integrated welded steel lacing rods are included for a professional net installation. Flush mounted gear plate cover and removable handle are chrome plated.



Corresponding Ground Sleeves:

24" Steel Ground Sleeve (GS-24) (Item # 63424)

24" Square Steel Ground Sleeve (GS-24SQ/ST) (Item # 63425)

24" Square Aluminum Ground Sleeve (GS-24SQ/AL) (Item # 63172)



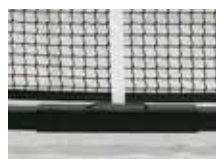
○ Premier™ SQ Surface Mount Black (Item # 63060)
Eliminate ground sleeves and easily install these surface mount tennis posts indoor or outdoor. These surface mount posts boast all the features of the standard Premier™ SQ posts except they offer a heavy-duty bottom welded base plate to secure posts to the court's playing surface.

○ Douglas® PPS-SQ Heavy-Duty Portable Tennis Systems

42' Standard Tennis Court 42"h x 42'l PPS-42SQ (Item # 63100)

Singles Tennis Courts: 42"h x 33'l, PPS-33SQ (Item # 63133)

These portable systems raise the bar and are the gold standard when permanent installation is not desired for either indoor or outdoor court applications.



Portable PPS-SQ systems are easy-to-assemble and offer the same long-lasting features as the classic Premier™ SQ tennis post. The 3" square tennis post is constructed from heavy-duty 11-gauge steel and are internally wound featuring a self-locking gear mechanism. Gears are constructed of plated steel and the small gear is case hardened. Gear housings and caps are made of cast aluminum alloy. Gear function is 30:1 to ensure a smooth, easy operation. Systems are finished with black baked-on polyester powder coat to resist rust and increase durability. Heavy-duty base frame is also constructed of 11-gauge 3" square steel and 3-1/2" square 3/16" heavy-wall steel. Net easily attaches with the top cable and to an eye-bolt on the base frame; no lacing rods are needed. Systems are complete with the 3.5mm TN-28 tennis net and a Velcro center strap. Flush mounted gear plate cover and removable handle are chrome plated. System is available in (2) sizes, 42' x 42'h Standard Tennis and 33' x 42'h Singles Tennis. Custom sizes are available up to 42' long and 42' high. The transporter features heavy-duty non-scurf swivel casters; (2) End and (1) Center caster assembly. Casters allow unit to pivot one end at a time for smoother transportability.

○ Replacement Reels

Replacement reels for external wind tennis posts. All hardware is included and handles are removable. Finished with black or green powder coat finish.



Deluxe Reel
Green (Item # 53433)
Black (Item # 53433B)

Aluminum construction with a smooth operation. Slotted to fit most posts.



Reel-1
Green (Item # 53432)
Black (Item # 53432B)

Heavy-duty steel construction with a smooth operation. Slotted to fit most posts.



○ Universal Replacement Caps

Baked on polyester powder coat finish

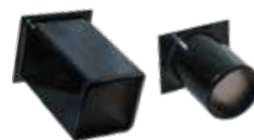
2-7/8" Green (Item # 53504)
Black (Item # 53504B)

3-1/2" Green (Item # 53505)
Black (Item # 53505B)



○ Ground Sleeve T-Plugs

Steel t-plugs to cover and fit into Douglas' ground sleeves. Finished with a black baked on polyester powder coat finish.



2-7/8" & 3" OD (Item # 63418)
3.5" OD (Item # 63419)
3" SQ (Item # 63420)
3.5" SQ (Item # 68155)

Pickleball Posts



○ Pickleball Premier™ XS Posts

Plated Gears

Green (Item # 63074)

Black (Item # 63075)

Stainless Steel Gears

Green (Item # 63074SS)

Black (Item # 63075SS)

Brass Gears

Green (Item # 63074BR)

Black (Item # 63075BR)

The Cadillac of posts is also available for pickleball court construction measuring 54" in length to sit 36" above ground. These 2-7/8" OD round posts are constructed of 8-gauge steel. Posts are internally wound and feature a jam-free cable tensioning hardware system. Choose from plated steel, stainless steel or brass gears. Plated steel gear housings and caps are made of die-cast zinc. Gear function is 30:1 to ensure a smooth, easy operation. Posts feature Allied's superior Flo-coat® galvanization process and are then finished in forest green or black baked-on polyester powder coat to resist rust and increase durability. Integrated welded steel lacing rods are included for a professional net installation. Flush mounted gear plate cover and removable handle are chrome plated.

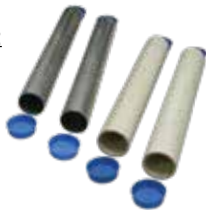
Corresponding Ground Sleeves:

24" PVC

(GS-24PVC) (Item # 63164)

24" Aluminum

(GS-24RD) (Item # 63171)



○ Pickleball Premier™ RD Posts

Green (Item # 63070)

Black (Item # 63071)

These popular posts are designed for pickleball court construction measuring 54" in length to sit 36" above ground. The Premier™ 3" OD round (RD) posts are constructed of heavy-duty 11-gauge steel. Posts are internally wound and feature a self-locking gear mechanism. Gears are constructed of plated steel and the small gear is case hardened. Gear housings and caps are made of cast aluminum alloy. Gear function is 30:1 to ensure a smooth, easy operation. Posts are finished in forest green or black baked-on polyester powder coat finish to resist rust and increase durability. Integrated welded steel lacing rods are included for a professional net installation. Gear plate cover and removable handle are chrome plated.

Corresponding Ground Sleeves:

24" Steel

(GS-24) (Item # 63424)



○ SW-36 Deluxe Pickleball Posts

Green (Item # 63078)

Black (Item # 63079)

These recreational workhorse posts are designed for pickleball court construction measuring 54" in length to sit 36" above ground. These classic external wind posts are constructed of 8 gauge steel in 2-7/8" OD. The posts, external gears and handle are finished in forest green or black baked-on polyester powder coat finish to resist rust and increase durability. The aluminum deluxe reel offers a smooth adjusting operation with a side mounted removable handle.

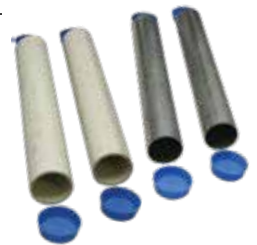
Corresponding Ground Sleeves:

24" PVC

(GS-24PVC) (Item # 63164)

24" Aluminum

(GS-24RD) (Item # 63171)



○ Douglas® Pickleball Nets

These Douglas® nets meet the USAPA's requirements for official Pickleball net sizes. Nets boast the same features as our Douglas® tennis nets and carry a 4 year warranty. Custom sizes are available.

JTN-30

36" h x 21'9" l (Item # 20105)

PN-30 -Optional shorter height

31" h x 21'9" l (Item # 20103)



○ Pickleball Premier™ SQ Surface Mount

Black (Item # 63080)

Easily convert existing tennis courts to pickleball courts with these easy-to-install surface mount posts. These 36" high posts boast all the features of the standard Premier™ SQ posts except they offer a heavy-duty bottom welded base plate to secure posts to the playing surface. The Premier™ SQ posts are constructed of heavy-duty 11-gauge steel. Posts are internally wound and feature a self-locking gear mechanism. Gears are constructed of plated steel and the small gear is case hardened. Gear housings and caps are made of cast aluminum alloy. Gear function is 30:1 to ensure a smooth, easy operation. Posts are finished in black baked-on polyester powder coat finish to resist rust and increase durability. Integrated welded steel lacing rods are included for a professional net installation. Gear plate cover and removable handle are chrome plated.

Portable Pickleball Systems

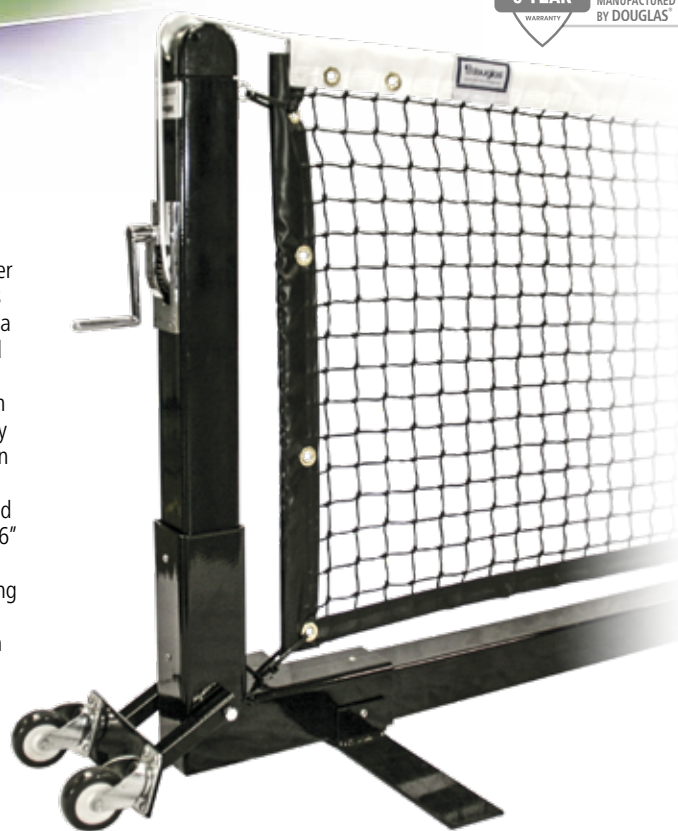


Lift assist handles are included for each end



○ Douglas® PPS22-SQ Portable Pickleball 36" h x 22' l (Item # 63122)

Portable PPS-SQ systems are easy-to-assemble and offer the same long-lasting features as the classic Premier™ SQ tennis post. The 3" square post is constructed from heavy-duty 11-gauge steel. This portable system is supported by unique flat stabilizer legs that offer a greater range of play and increases player safety. Post is internally wound and features a self-locking gear mechanism. Gears are constructed of plated steel and the small gear is case hardened. Gear housings and caps are made of cast aluminum alloy. Gear function is 30:1 to ensure a smooth, easy operation. Systems are finished with black baked-on polyester powder coat to resist rust and increase durability. Heavy-duty base frame is also constructed of 11-gauge 3" square steel and 3-1/2" square 3/16" heavy-wall steel. Net easily attaches with the top cable and to an eye-bolt on the base frame; no lacing rods are needed. Systems are complete with the PN-30 Pickleball net and a velcro center strap. Flush mounted gear plate cover and removable handle are chrome plated. The end wheel assembly features heavy-duty non-scurf swivel casters that allow for smooth and easy mobility. The wheel assembly bracket simply flips up and out of the way while unit is in play.



○ PickleNet Deluxe (Item # 33162)

With the PickleNet players can enjoy pickleball on any flat surface indoors or outdoors. Complete system is fast and simple to assemble and easily maneuvered with the 4" locking wheels. The PickleNet Deluxe system is made from powder-coated steel and comes in official Pickleball dimensions (22' x 34"). Center-strap design maintains consistent height along the net. Adjustment straps on net edges provide excellent net tension. Made from heavy 420D nylon, our PickleNet Deluxe bag features a durable zipper, carry straps, and internal sections to make portable net storage easier than ever. Strong 1.5" x 3" oval tubing allows for a fast set up and automatic alignment of the center frame. The elastic bottom net band speeds up net set-up, helps maintain consistent net tension, and takes stress off of the net to increase durability.



○ SwiftNet Portable Pickleball Net (Item # 33165)

The SwiftNet Portable Pickleball Net System allows precise regulation heights from their net. The unique locking system and supportive brace used on this system keep it at the perfect 34" height at the center and 36" height at side lines of the court. The net uses a high-tensile, non-stretch top cord which means that the net doesn't sag or require re-adjustment even after weeks of use. With only five parts, the net can be quickly and easily assembled (or disassembled) in under 3 minutes. The SwiftNet is incredibly lightweight, weighing only 14 lbs.



○ Pickleball Portable Set (Item # 33160)

Lightweight, portable pickleball set can be set up and moved in as little as 8 minutes. Frame is made from hollow steel tubing that is powder coated with a bright green paint. System has a raised lateral bar that allows for balls to pass underneath and a center stabilizer for additional support. The black mesh net has vinyl white net bindings with an "easy buckle" net tension system. Portable system comes with a nylon carry case with a velcro strap for the frame.

Courtside Accessories



Cabana Benches

- 6' Model (4' long bench) (Item # 30021)
- 8' Model (6' long bench) (Item # 30019)
- 10' Model (8' long bench) (Item # 30020)

The covered cabana benches are an attractive way to improve the look and functionality of your court. The square heavy-gauge steel frame has a black powder coat finish for ultimate protection. The Durawood plastic composite bench is maintenance free and weather resistant. Bench is bolted and welded to the heavy-gauge steel framework. Choose from three possible seating configurations. Standard colors are forest green, pacific blue, burgundy, black and Forest green stripe. Custom canvas colors and printing options are available at an additional charge. Bench can be installed "surface mount" or "direct burial".



Fence Cabana (Item # 33854)

The Fence cabana is perfect for tennis courts. The awning easily attaches to standard 10' high chain link fences and can be installed in under 30 minutes with two people and simple tools. Fence-mounted awning gable design measures 10' Long x 4' Wide x 2'6" High. Framing is constructed of powder coated, heavy gauge galvanized steel. The frame bolts securely to a fence's top rail with U-brackets. Frame folds at hinges for quick removal and storage. All-weather, fade resistant Sunbrella canvas comes with a 5 year fade warranty. Choose from standard colors forest green pacific blue, burgundy, black and Forest Green Stripe. Custom canvas colors are available at an additional charge.



FOREST GREEN

GRAY

CEDAR

Durawood Dent-Saver Bench

4' (Item # 33858) 5' (Item # 33859) 6' (Item # 33860) Dent-saver benches are built to last; constructed from rugged, recycled HDPE plastic lumber. Material is incredibly weather resistant and will not rot, splinter or warp as it is impervious to water, most chemicals and UV light. There are no metal fasteners, making them safe and rust-proof even in the most humid environments. Benches measure 17" high, 18-1/2" deep and 4', 5' or 6' long. Graffiti washes off easily, and painting is never required. Best of all, each bench diverts over 500 post-consumer plastic milk jugs from overcrowded landfills.



Classic Umpire Chair

- Green (Item # 34777) Black (Item # 34778)

The heavy-duty classic umpire chair is made of custom fabricated powder coated steel that will last a lifetime. Choose from standard rust proof green or black finish. Custom painted chairs with logos are available to match your team or facility. Comfortable cushioned seat has removable cushions for storing out of the weather when not in use. Top and bottom weather treated wooden tables. Smooth wheels will not scuff court surfacing. Optional umbrella is available.



Court Numbers (Item # 34756)

Durable dark green plastic court signs with white printing. Signs have pre-drilled mounting holes. Vertical orientation sign measure 8" x 10". Choose from numbers 1 to 20; please specify desired numbers.



Court Signs

Court Rules (Item # 34872)

- Soft Sole Shoes Only (Item # 34872A)
- Courts Closed for Maintenance (Item # 34872B)
- Please Register (Item # 34872C)
- Please Keep Gates Closed (Item # 34872D)

Durable dark green plastic court signs with white printing. All signs are horizontal except "court rules". Signs measure 7" x 10" and have pre-drilled mounting holes.



Courtside Cooler and Accessories

A functional and attractive courtside alternative to water fountains.

Metal Cooler Stand Set (Item # 34912)

Complete Cooler Stand set is equipped with a 5-gallon Igloo™ cooler, a cup dispenser along the side and a receptacle.

Court Caddy Basket

- Green (Item # 34746) Black (Item # 34746B)

Receptacle for beverage cups and other court trash

Cup Dispenser (Item # 34903) Black cup dispenser conveniently attaches alongside the cooler for a quick drink.

Igloo™ Cooler, Green (Item # 34900)

Lightweight insulated cooler holds 5-gallons of liquid. All green in color with a flat lid. Side carrying handles.

Court Caddy Green (Item #34745) Black (Item #34744)

The court caddy keeps personal items in its place. Valet tray includes hooks to hang towels or jackets, indented holders to eliminate beverage spills and a trash can below for waste. Assembly fits most tennis posts, attaching by a simple hose clamp. Constructed of durable plastic Choose from dark green or black.

Score Post (Item # 34732)

Manual tennis score keeper uses tennis balls to score matches with standard scoring allowing for (3) traditional sets or an 8-game pro set. Has an all-metal support that attaches to the net post with quick release hose clamps for easy court change over (no tools needed). Both games and sets won are displayed.

Water Removers

Court Dry

Courtdry I w/ EZ RR-36 (Blue) (Item # 34735)

Courtdry II w/ SR-D RR-36 (Gray) (Item # 34734)

The tough 3' wide foam roller quickly absorbs and pushes away water. Powdercoated stainless-steel frame has a T-socket that securely holds the roller and handle in place during use. Removable roller can easily be substituted for a replacement roller.



Replacement Rollers

E-Z RR-36 (Item # 34603)

5/8" thick polyvinylaldehyde.

Creates an excellent "rolling seal" with the court surface.

SR-D RR-36 (Item # 34742)

3/4" thick seamless

polyurethane. Extra thick construction resists tears and separation to provide up to three times more drying power. Ideal for slightly uneven courts.

Deluxe Squeegee

Squeegee (Item # 34827)

Replacement blades (Item # 34827R)

Squeegee has a reinforced aluminum frame with 36" rubber blade for quick water removal. 60" long handle is powder coated with a vinyl grip. Reinforced gusset bracket at base for more control.



Rally Master - Vertical or Sloped

Rally Master Backboards can be used for tennis, lacrosse, soccer, basketball and many other applications. Backboards are available in a vertical or a sloped option. All backboards measure 10' high and are available in 12', 16' or 20' widths. Backboards can be installed on standard fence post diameters of 2-1/2", 3" or 4" OD. Backboards come with an industry leading 20-year warranty.

When ordering please specify Vertical or Sloped along with the outside diameter of the fence post the backboard will be installed on.

34852	10' x 12'	Each	500 lbs.
34854	10' x 16'	Each	650 lbs.
34856	10' x 20'	Each	800 lbs.



Rally Master Catch Net

These heavy duty, black, UV stabilized catch nets mount to the top of the backboard with powder coated steel brackets. The net support frame is made of powder coated steel tubing and super-strength corrosion resistant connectors. Nets are 5' high and available in 12', 16' or 20' widths.

34852N	5' x 12'	Each	16 lbs.
34854N	5' x 16'	Each	20 lbs.
34856N	5' x 20'	Each	24 lbs.



- Panel Construction - Solid-core, 3/4" UV stabilized dense plastic (150 lbs per panel) with the rich green color molded directly into the panel. Net lines are also permanently etched into the panels. Custom colors and custom engraving available.
- Reduced Sound - Patent-pending vibration dampeners and mounting technique substantially reduce rebound noise. Decibel readings indicate that a tennis ball hitting a Rally Master Backboard is no louder than a tennis ball hitting a tennis racket.
- Mountings System - Installation is fast and simple with their unique patent pending mounting system. It provides a universal fence bracket that allows the installer to quickly adjust the strut alignment to compensate for fence posts that are slightly bent or out of plumb. System includes all the mounting hardware for a complete installation.
- Corrosion-Resistant Hardware - Panels are mounted to heavy-duty, galvanized cross braces that are attached to vertical posts using galvanized hardware for unmatched durability.
- Sizing - Backboards are manufactured in 10' x 4' panels. The minimum size available for purchase is 10' x 12'. There is no limit on length, the only requirement being that the total length is divisible by four feet.



Bakko Backboards

Each panel is 4' wide, 8' or 10' high and weighs 80 to 150 pounds. The Bakko assembly kit holds the panels in a tight, unitized, side-by-side construction. Kits come in traditional flat and single curved styles. All kits are complete. Minimum adequate size is 8' high by 12' wide backboard (3 panels). Attaches to two tennis court fence posts which, on most tennis courts, are spaced 10' apart. Typically a 16' wide (4 panels) and 20' wide (5 panels) backboards require three tennis fence post for attachment. If post are 8' apart a 16' wide backboard can be elegant. 20' wide backboards are very popular, especially in the 10' high series.

*May have extended shipping lead times.

SPECIFICATIONS:

- Encased in thick fiberglass and gel coat
- Coated with solar and impact resistant polyurethane paint
- Multiples of 4' wide panels
- 10 Year pro-rated warranty on backboard structure
- 1 Year warranty on paint



ECONOMY FLAT



PROFESSIONAL FLAT



SINGLE CURVE

Economy Flat

- 8'H x 12'W (Item # 34835A)
- 8'H x 16'W (Item # 34835B)
- 8'H x 20'W (Item # 34835C)
- 8' high panels, 1.75" thickness
- Sound deadening matrix interior
- Pressure treated 2 x 4's for horizontal supports
- Customer required to drill holes

Slimline Flat

- 8'H x 12'W (Item # 34836A)
- 8'H x 16'W (Item # 34836B)
- 8'H x 20'W (Item # 34836C)
- 8' high panels, 1.75" thickness
- Interior compartmentalized metal frame
- Steel channels for horizontal supports
- Pre-drilled for easy installation

Professional Flat

- 10'H x 12'W (Item # 34837A)
- 10'H x 16'W (Item # 34837B)
- 10'H x 20'W (Item # 34837C)
- 10' high panels, 2.5" thickness
- Heavy, reinforced metal, interior frame
- Sound deadening matrix interior
- Wheel attachments for easy installation
- Steel channels for horizontal supports

Single Curved

- 10'H x 12'W (Item # 34838A)
- 10'H x 16'W (Item # 34838B)
- 10'H x 20'W (Item # 34838C)
- 10' high panels, 2.5" thickness
- Gentle concave curve - top to bottom
- Sound deadening matrix interior
- Wheel attachments for easy installation
- Steel channels for horizontal supports

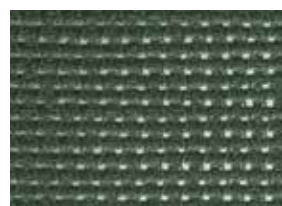
Windscreens/SportScreens

All Douglas® windscreen materials are made for all locations and weather conditions. All high-quality material options are UV treated, breathable and mildew resistant for maximum longevity. They are made to withstand the elements while keeping your facilities looking sharp. Choose from premium windscreen fabrics in both vinyl coated polyester (VCP) and polypropylene. Our range of materials include both open and closed mesh fabrics, standard and custom colors and full color digital printing.

Windscreens are available in standard 6 ft and 9 ft heights and in custom heights by request. Screen length is completely custom and made to order to the nearest inch; 60 ft is the maximum recommended length per panel.



Black



Dark Green



Yellow



Red



Navy Blue



Brown



White



Purple



Burgundy



Bright Green



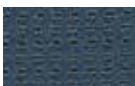
Royal Blue



Orange



Gray



Open Blue

Vinyl Coated Polyester

This versatile and attractive windscreen fabric is durable and boasts great weather resistance. Vinyl Coated Polyester (VCP) screens are available in a variety of colors and custom digital printing and logos can be printed directly on the material.

Fabric: 50% vinyl, 50% polyester,
Open (VCP) - 9 x 12 weave

Windbreak: Open - 80%

Weight per square yard: Open - 8 oz.

Tensile Strength: Open - 230 x 200

Colors:

Standard Colors: Dark Green or Black

Additional Colors: Open Tournament Blue, Royal Blue, Red and Navy Blue

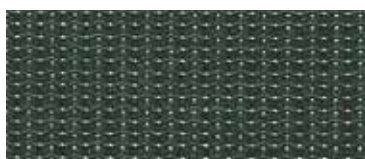
Special Order Colors:

Yellow, White, Purple, Orange, Burgundy, Gray, Brown or Bright Green

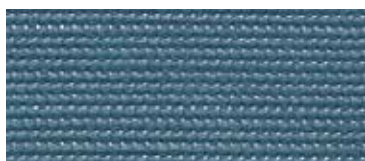
Warranty: 3-Year Limited



Black



Dark Green



Open Tournament Blue

VCP Max™

VCP Max goes one step further by offering maximum tensile strength and visual blockage. At 85% windbreak, VCP Max allows more airflow than closed mesh screens, but provides a better visual background than open mesh screens. This versatile and attractive windscreen fabric is durable and boasts great weather resistance. Custom digital printing and logos can be printed directly on the material.

Fabric: 16 x 17 weave

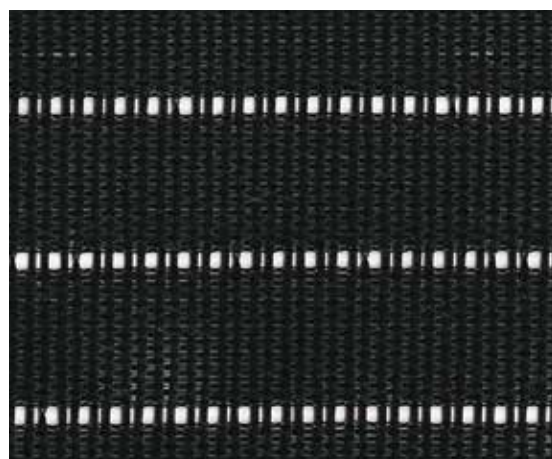
Windbreak: 85%

Weight per square yard: 10 oz.

Tensile Strength: 395 x 401

Colors: Dark Green, Black or Open Tournament Blue

Warranty: 4-Year Limited



Black



Dark Green

PolyPro™ Plus Premium

This 100% Polypropylene material is a vented open mesh windscreen pattern that allows air to easily pass through while still offering privacy. This open fence screen material puts the least amount of strain on your fence making it ideal for taller fences and windy areas where high airflow is a requirement. PolyPro™ Plus is a highly durable leno weave material that is heat-set so your screens will never shrink or change shape. Weather and UV protection is extruded into every fiber of the Polypropylene windscreen for maximum performance and longevity.

Fabric: 100% polypropylene;

OMP: Open Mesh -

28 x 14 leno weave

CMP: Closed Mesh -

30 x 16 leno weave

Windbreak: Open - 85%
Closed - 95%

Weight per square yard: Open - 7 oz.
Closed - 8 oz.

Tensile Strength: Open - 380 x 185
Closed - 450 x 215

Colors: Dark Green or Black

Warranty: 4-Year Limited





VCP with 3-Ply Hems



OMP with 4-Ply Hems



VCP with Center Tab (CT)



OMP with Center Tab (CT)



OMP with (CRT)
Center Reinforcement Tape

○ Douglas® Custom Fabrication

All our windscreen fabrics are custom made to order; we custom cut all panels to exact sizes to ensure an accurate fit. As the manufacturer we control every aspect of the production process. Every piece of material goes through quality control checks to ensure accuracy and precision. We pay meticulous attention to detail and guarantee consistent, quality craftsmanship. Every time.

Extra Strong Hems

All panel perimeters are reinforced with durable lock-stitched sewn hems seamed with vinyl. #2 brass grommets are spaced every 12" on panel sides and every 18" along the top and bottom.

VCP and VCP MAX™ fabrics are hemmed with Douglas's 3-ply extra-strong hems. These durable sewn hems are seamed with solid vinyl inserts that are double sewn to 1-1/2 inches wide.

PolyPro™ Plus (OMP) windscreen material is hemmed with Douglas's 4-ply extra-strong hems. These durable hems include solid vinyl inserts as well as an 18oz vinyl overlay and are double sewn to 1-1/2 inches wide.

Center Reinforcement

When installing windscreens, center reinforcement is recommended for anti-billowing on all panels that are taller than 6 ft and where strong winds prevail. Center reinforcement allows the screen to be secured to the middle of the fence with tie wraps or lacing cord attachment. All Douglas® windscreens over 6 ft in height include a center tab with grommets.

(CT) VCP and VCP MAX™ fabrics are sewn with 18 oz black vinyl and grommets are placed every 18 inches to secure the screen to the fence. The reinforcement tab is only visible on the backside of the fence screen for a cleaner installed appearance.

(CT) PolyPro™ Plus (OMP) windscreen material are reinforced with Center tabs that are double stitched with 3" wide heavy polyester webbing and grommets are placed every 18" to secure the screen to the fence. The center tab grommets are only placed on the webbing and do not go through the fence screen material. This results in a cleaner installed appearance with no visible grommets on the front side of the material.

(CRT) Center Reinforcement Tape Optionally, 9' screens may substitute a Center Reinforcement Tape (CRT). CRT's are double stitched with 1-1/2" wide heavy polyester webbing and grommets are placed every 18". Unlike, standard Center Tabs, with Reinforcement tape, grommets are secured through the fabric and webbing; making the grommets visible on the front side of the fabric. With this method grommets can be laced to the fence with braided rope.

○ Air Vents

Optional air vents allow air to pass through and help take the strain off your fence and windscreen. Air vents are recommended for screens taller than 6 ft and where high winds prevail.

Die-Cut (AV) (Item # 21001)

Standard air vents are a die-cut and heat sealed in a half moon shape. Air vents measure 8" wide and are 5" high and are cut out on 10 ft intervals on center. AV vents are recommended and are only available on vinyl-coated polyester material.

Reinforced(AVR) (Item # 21002)

The Douglas® AVR vents are rectangular sewn cut outs that measure 10" wide x 8" high. These vents are perimeter hemmed with polyester webbing and are placed at 10 ft intervals on center. AVR vents can be cut into any windscreen material.



○ Douglas® Custom Graphics

Add digital printing to any VCP fabric and promote team spirit by adding your team affiliation, brand your facility with a company logo or simply add advertisements to support sponsors. Even simple lettering can make an enormous impact on the professional look on a facility.

Our elite printing process allows us to print directly on your material so there's no white back side like other digital printing companies. With the use of quality long lasting UV inks, your printing and logos become part of the material. The UV resistant inks keep their vibrancy for years and no extra coating is needed. Your investment will not crack, peel, or tear like alternative vinyl decals. Our advanced digital printing technology allows for more detailed multi-color capabilities and has a quick turnaround and greater accuracy.

Your digital printing will last the lifespan of the fence screen it is printed on. We back the quality of our digital printing with the same warranty as our windscreen materials.



Windscreens/SportScreens

Windscreens are a great addition to complete any tennis or pickleball court because they offer many benefits including privacy, a solid background, wind reduction and just an overall more enhanced appearance. Unlike other sports facility fences, Tennis court chain link fences are typically 10 ft in height. The most common windscreen height that is ordered for a tennis court is 9 ft high and the screen is installed at the top of the fence leaving a foot at the bottom of the fence. This allows for routine mowing and weed eating without worrying about damaging the fence screens. Alternatively, some facilities prefer to order 6 ft high windscreens and center the panels on the 10 ft high fence.



Installation Accessories

These industrial tie wraps have a plastic insert and are recommended for windscreen installation. Sold in packages of 100 qty.

TR-50P (Item # 31656) 7" Tie wrap, 50 lb. break strength

TR120P (Item # 31657) 8" Tie wrap, 120 lb. break strength

TR-50XL (Item # 31651) 12" Tie wrap, 50 lb. break strength

TR-120XL (Item # 31655) 14" Tie wrap, 120 lb. break strength

TR-120XL (Item # 31652) 17" Tie wrap, 120 lb. break strength



Plastic C-Snap

3" S-Hook

SH-3 (Item # 31663) 3" galvanized "S" hooks

C-3P (Item # 32675) 3" plastic C-snap

BNC (Item # 31600)

Braided lacing cord 600' reels

BLR (Item # 31601M)

Braided lacing rope black poly 3/16" 1000' reels 550 lb. break strength

Braided Rope



Privacy Screen

This fence screen is an inexpensive solution for athletic fields, dugouts, bleachers or any other location where privacy or shade is desired. Privacy screen material is lightweight, tear resistant and will not unravel. Construction is 100% high density polyethylene that is weather resistant and UV stabilized. The material will not fade or deteriorate from natural elements and is also resistant to mold and mildew. Privacy Screen can be purchased by the roll to be cut-on-site or purchased in finished 50 foot panels. To maximize strength, an optional reinforced hem with grommets can be applied to the top and bottom edges. These optional hems will reduce the overall roll height. Custom printing is available, contact us with your dimensions for a quote.

Material Specifications:

Construction: 85 – 90% Knit Raschel Fiber

Content: 100% High Density Polyethylene

Available Colors: Dark Green, Black, Blue, Brown or Beige

Unfinished Rolls -Cut on site

44" x 150', for 4' fence (Item # 36924)

68" x 150', for 6' fence (Item # 36928)

92" x 150', for 8' fence (Item # 36932)

Optional Reinforced Hem (Item # 26932)

Optional reinforced hem with grommets (shown right) can be applied to the top and bottom edges to maximize strength. Optional hems will reduce the overall roll height.



Finished Panels

Panels are finished with perimeter hems and grommets for extra reinforcement. Available in green or black. Shown far right.

68" x 50' Panels

Green (Item # 26928G)

Black (Item # 26928B)

92" x 50' Panels

Green (Item # 26932G)

Black (Item # 26932B)



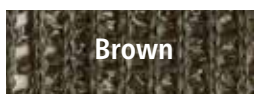
Dark Green



Black



Blue



Brown



Beige

Backdrop Curtains / Gym Dividers

Add or replace your existing Backdrop or Divider Curtains with Douglas® quality. Divider curtains allow you to make the most effective use out of your facility by dividing a large open space into smaller sections for various sports and other events. Divider curtains provide safety, visual privacy and a sound barrier between spaces. Curtains can be custom fabricated with all solid vinyl, partial vinyl/partial netting or mesh. Solid vinyl backdrop curtains can also be installed around the perimeter walls of your facility to provide a visual backdrop for players and aesthetic appeal to onlookers.

All curtains are customized to your specifications and produced from the most durable materials available. Choose from heavy duty 14 oz or 18 oz vinyl in a variety of colors. Options for the top portion of divider panels are constructed of FR open weave white vinyl mesh or netting. Besteel 170 Series Walk-draw track systems are available for hanging the curtains. Tracks are constructed of 14 gauge galvanized steel in both suspended and direct mount installation options.



14 OZ. FR VINYL

YELLOW	GOLD	ORANGE	RED	MAROON	KELLY GREEN	FOREST GREEN	TAN
LIGHT BLUE	CHAMPION BLUE	ROYAL BLUE	NAVY	PURPLE	WHITE	BLACK	GRAY

18 OZ. FR VINYL

FOREST GREEN	OPEN TOURNAMENT BLUE						
YELLOW	ORANGE	RED	MAROON	KELLY GREEN	TAN	BROWN	GRAY
LIGHT BLUE	ROYAL BLUE	NAVY	VIOLET	PURPLE	WHITE	BLACK	CHARCOAL



Material

Add or replace your existing backdrop curtains with Douglas® quality. Backdrop curtains are constructed of vinyl coated polyester that is mildew resistant and UV treated. Vinyl material meets California Fire Marshal requirements for flame resistance in indoor use. This strict code meets or exceeds most city requirements. Choose from 14 oz or 18 oz/square yard weights in a variety of colors. 18 oz is recommended for greater durability and life expectancy.

Dimensions

Heights of curtains generally range from 9' to 12' and custom heights are available to meet your needs. The maximum recommended length per curtain is 60'.

Fabrication

Seams are heat-sealed and reinforced hems are double sewn with lock stitching. Brass grommets are typically spaced every 12" on the top of backdrop curtains. The sides can be sewn with grommets or velcro to attach curtains together or without grommets to overlap curtains instead. Douglas can accommodate any special requirements such as placement of doorways, ventilation/viewing cut-outs with netting or mesh screen and divider wings.

Custom Printing

Our vinyl fabrics are digitally printed with our high-quality UV digital printing process. Our elite printing process allows us to print directly on our material so there's no white back side like other digital printing companies. Your printing and logos become part of the material. Your investment will not crack, peel or tear like vinyl decals. Our digital printing allows for more detailed multi-color capabilities and has a quick turnaround and greater accuracy.

Available Colors

Additional colors are available upon request.

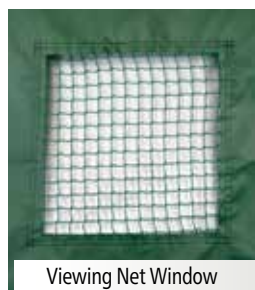
*10 oz. White FR Vinyl is also available for High-Line Backdrop Curtains (to go above perimeter backdrop curtains)



Doors with Viewing Mesh Window



Viewing Mesh Window



Viewing Net Window



Court Divider Netting

Create a barrier in between tennis courts for uninterrupted play with Douglas® high quality divider nets. Court divider nets are made from knotless pylon and custom fabricated to your facility's required dimensions. We provide both indoor and outdoor court divider netting. Black and green styles are weather treated to withstand moisture and sunlight. Natural white netting is for indoor use only. Kickplates are available for indoor application in either 12" high Solid Vinyl or 18" high VCP. Tape borders are double sewn with 1-1/2" reinforced solid vinyl. Heavy-duty brass grommets are spaced 18" along top (standard). Additional grommets may be specified. Standard heights are 10' or 12' and custom heights are available.

○ #420 Knotless Pylon

This lightweight, pylon netting is ideal for divider netting. #420 Knotless Polypropylene (Pylon) is 1-1/2" square mesh and has a 125# break strength. Choose from Black or White. Weather treated to withstand moisture and sunlight. Netting is finished with a vinyl border and provides the netting with added strength while keeping the nets shape. The reinforced, double stitched vinyl also gives the net a sharp appearance. Optional brass grommets can be added and are placed every 18".

1-1/2" SQ Mesh

Lightweight, 125 lb. break strength

Black, Tape Bound with Grommets (Item # 22009)

White, Tape Bound with Grommets (Item # 22005)

○ Premium Knotless Polypropylene HTPP

This Premium high tenacity Polypropylene (Pylon) netting offers maximum longevity and durability. Pylon netting is ideal for high impact applications. 3.0 mm has a 250# break strength and is available in Black, Dark Green or White. Netting is treated and extruded through the fibers for maximum weather and UV resistance. Netting is finished with a vinyl border and provides the netting with added strength while keeping the nets shape. The reinforced, double stitched vinyl also gives the net a sharp appearance. Optional brass grommets can be added and are placed every 18".

3.0 mm; 1-3/4" SQ Mesh

Medium Weight, 250 lb break strength

Black, Tape Bound with Grommets (Item # 22260)

Dark Green, Tape Bound with Grommets (Item # 22261)

White, Tape Bound with Grommets (Item # 22262)

○ Replacement Kickplates



VCP Mesh Kickplate
18" High with Velcro Top



Solid Vinyl Kickplate
12" High with Velcro Top



Netting Kickplate
24" High with Velcro Top



○ Prefabricated Divider Panels

These prefabricated divider netting panels measure 10' x 60' and 10' x 65' and can be used indoors or outdoors. Netting is 1-3/4" sq mesh.



○ #18 Knotted HDPE

Netting panels are 10' x 60' and can be used indoors or outdoors. This high density Polyethylene (HDPE) netting offers maximum longevity and durability. Panels are constructed of black #18 knotted 1-3/4" sq mesh netting with a 125 lb break strength. This HDPE netting is ideal for low impact applications. Netting is treated and extruded through the fibers for maximum weather and UV resistance. Outside perimeter has a reinforced sewn rope border making it easy to hang.

1-3/4" SQ Mesh

Lightweight, 125 lb break strength

10' x 60' (Item # 32014)



○ #420 Knotless Pylon

This black lightweight, pylon netting is ideal for divider netting. #420 Knotless Polypropylene (Pylon) is 1-3/4" square mesh and has a 125# break strength. Netting is weather treated to withstand moisture and sunlight. Netting is finished with a vinyl border and provides the netting with added strength while keeping the nets shape. The reinforced, double stitched vinyl also gives the net a sharp appearance. Brass grommets are spaced every 18".

2.0 mm 1-3/4" SQ Mesh

Lightweight, 125 lb break strength

10' x 65' (Item # 32020)





○ Vinyl Court Signs
Constructed of 18 oz vinyl, perimeter is hemmed with grommets.

Court Numbers (Item # 22204)
Numbers are from 1 through 20 and measure 9" H. Signs measure 12" x 12"

Exit Sign (Item # 22202)
Red vinyl with white letters measuring 9" high. Sign measures 18"H x 36"L





5661 Brownfields Drive | Baton Rouge, LA 70811

855-774-9974 | info@qualitycourt.com | www.qualitycourt.com

