

Tennis Court Construction and Resurfacing

Mike Stewart



How much does it cost to build a court?

- **The average cost to build a residential tennis court from start to finish including dirt work, post tension slab, fencing, lighting, surfacing and accessories, is about \$120,000.**
- **Prices can easily range anywhere between \$100,000 to \$150,000 depending on options.**

How much does it cost to build a court?

One important note: the nature of your property or land, along with the options you choose, will affect the final cost of your tennis court project. These factors include the amount of dirt work needed to provide a proper foundation for your new slab.



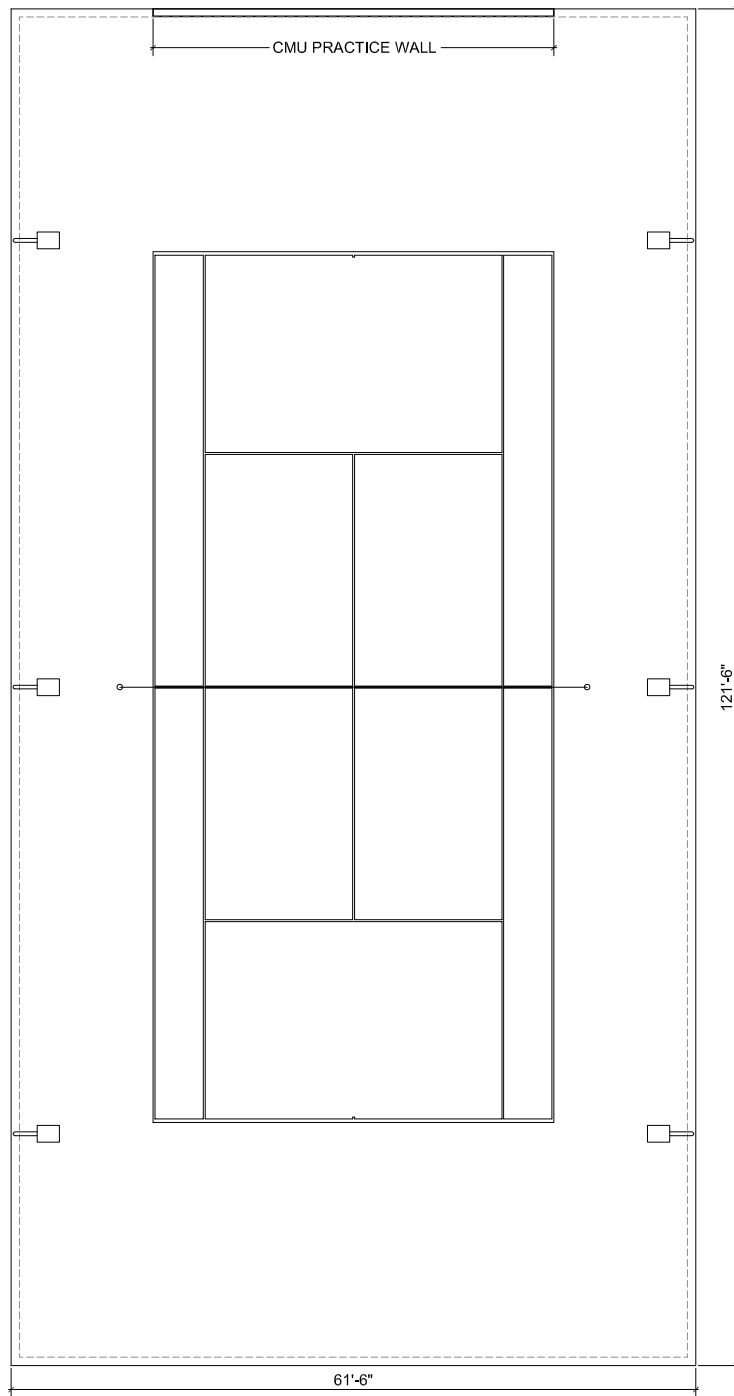
How much does it cost to build a court?

NEXT:

The amount of fencing around the perimeter of your court, and the grade of fencing you choose. Fencing materials are offered in a galvanized finish or colorized vinyl.

EXAMPLE:

- 10 ft. galvanized
- 9 gage 1 3/4 inch mesh
- Schedule 40 pip
- 3 inch terminal posts
- and 3 inch line posts
- Continuous Top, Middle, and bottom railing 1-5/8" schedule 40
- *Fencing set inside the perimeter of the slab / Back of the post minimum 6 inches from edge of slab

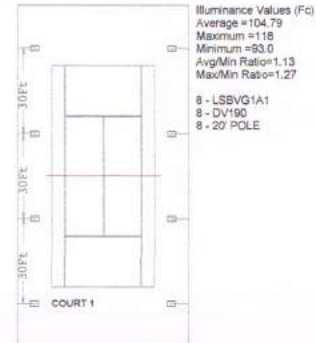
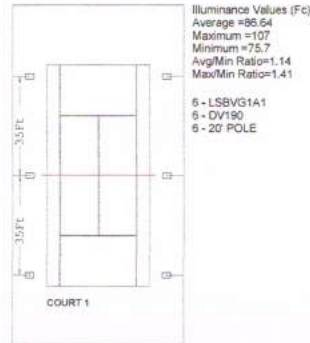
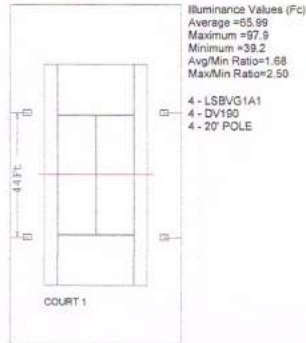


How much does it cost to build a court?

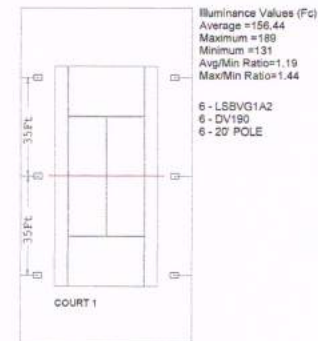
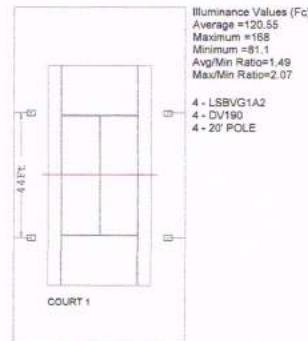
- **Lighting options can include 6 or 8 lights per court, or you may choose no lighting to reduce your overall cost.**

STANDARD LAYOUTS

CENTER COURT PRO SINGLE LAMP



CENTER COURT PRO DUAL LAMP



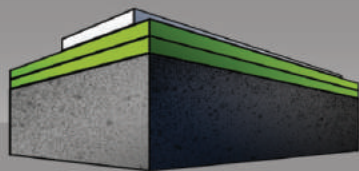
Center Court's standard layouts are designed by our in-house engineering staff that is intimately familiar with tennis court sizes, configurations, and light level requirements. Our knowledgeable staff can help design custom courts to fit any specific needs you may have. Whether your needs are for a recreational court in your backyard, or a design for a state-of-the-art sports complex, Center Court has the tools to aid you in completing the project from the very beginning all the way through to opening day.

Local codes, wind zones, and fixture loads determine the necessary size and strength of the poles needed for your tennis courts. Contact your local Center Court sales representative for a complimentary cost analysis of your tennis court application.

How much does it cost to build a court?

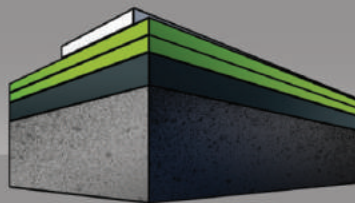
- **Surfacing options will also affect your pricing. We have four surfacing options from which to choose.**
- **For Park and Rec use, we recommend our QCI Classic System.**

ABOVE & BELOW OUR SURFACES



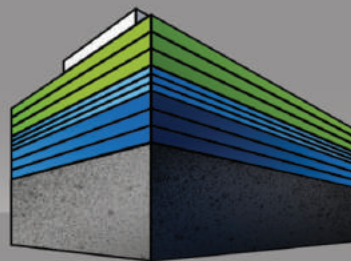
QCI TOP COAT

When your existing court needs to be revitalized and given new life, our Top-Coat service is the product for you. We'll do simple repairs, touch-ups, repaint and re-stripe to make your court look and play like new.



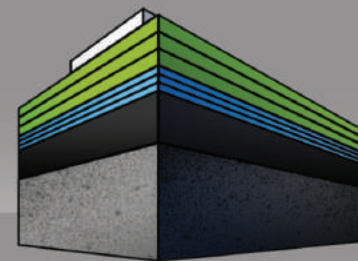
QCI CLASSIC

The QCI Classic Tennis Court System is used when you need a true tennis surface or resurfacing job including patchwork, acrylic surfacing for existing or brand new courts. Perfect for schools, colleges, and all hard-courts.



QCI PREMIER

The Premier system is our entry level soft-court cushioned system. We use a liquid acrylic cushion to provide a slight "give" to the surface, making play easier on joints. The feel of the court is exceptional and luxurious, making it a perfect fit for private tennis clubs and residential courts.



QCI SUPREME

For high-end use, there's nothing better than Supreme. It has the soft comfort of clay courts without the sliding effect of clay. Perfect for private residential and elite tennis courts.







Other Important Information to Consider:

- **Tennis Court(s) should be oriented North to South – WHY?**
- **It is important to avoid the players having to look into the sun when facing the opposite end of the court.**

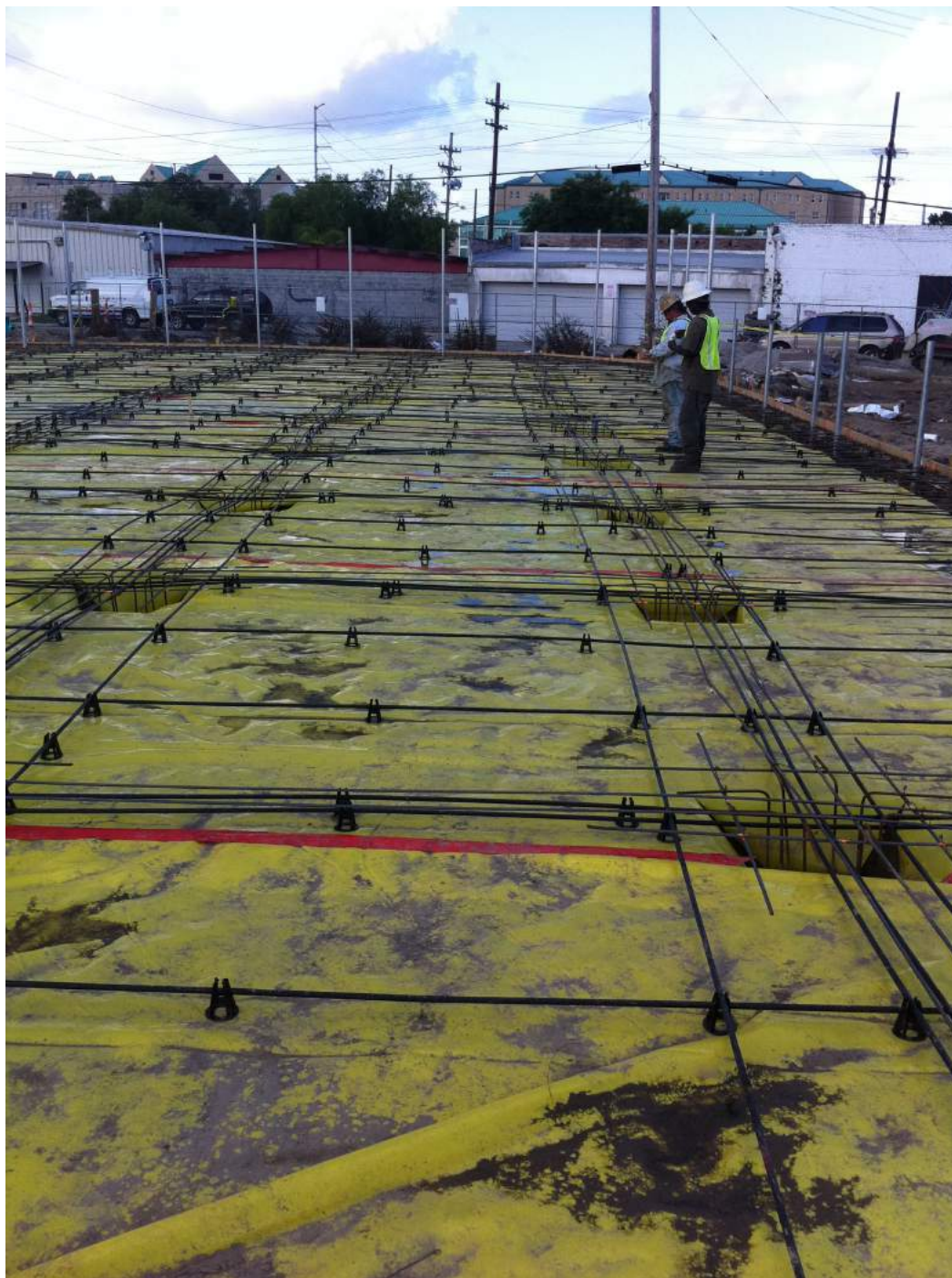
Post Tension Concrete Slab Base

- **Min. Concrete Thickness 4 inches**
- **Min. 3000 PSI – NOTE: We recommend 3,500 PSI**
- **Straight Cement – NO Fly Ash / NO Curing Compounds / INCLUDE Mid Range Water Reducer**





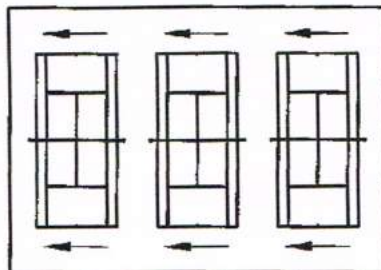




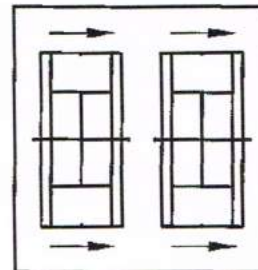


SLOPE!

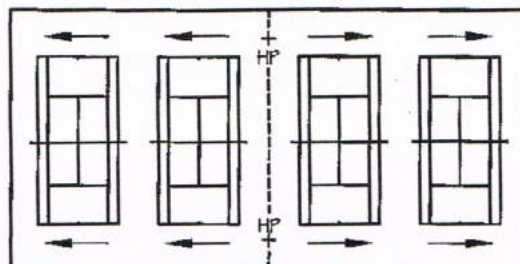
- Tennis Court Slope Requirements: QCI Recommends (based on experience of almost 20 years and over 200 PT Slabs built):
- The MAXIMUM slope allowed is 1 inch every 10 ft. (0.83% slope)
- Courts should slope in a true plane – Preferably East / West



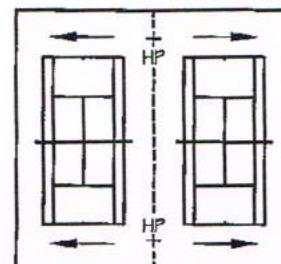
DRAINAGE IN A SINGLE PLANE
(SIDE TO SIDE PREFERRED)



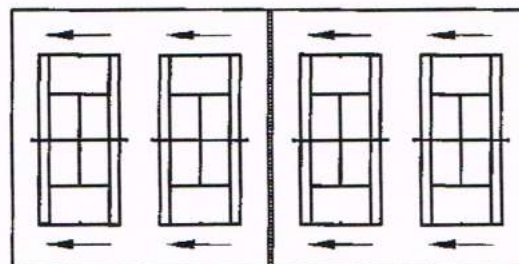
DRAINAGE IN A SINGLE PLANE
(SIDE TO SIDE PREFERRED)



DRAINAGE WITH CENTERED HIGH POINT
(ONLY WITH DIVIDER FENCE)



CENTERED HIGH POINT
(ONLY WITH DIVIDER FENCE)



DRAINAGE IN A SINGLE PLANE
WITH INTERCEPTED FLOW

NOTES:
MAXIMUM RECOMMENDED
LENGTH OF SLOPE ACROSS
COURT SURFACES IS 180'.
LONGER LENGTHS CAN
LEAD TO EROSION OF THE
SURFACE OR SURROUNDING
AREAS.

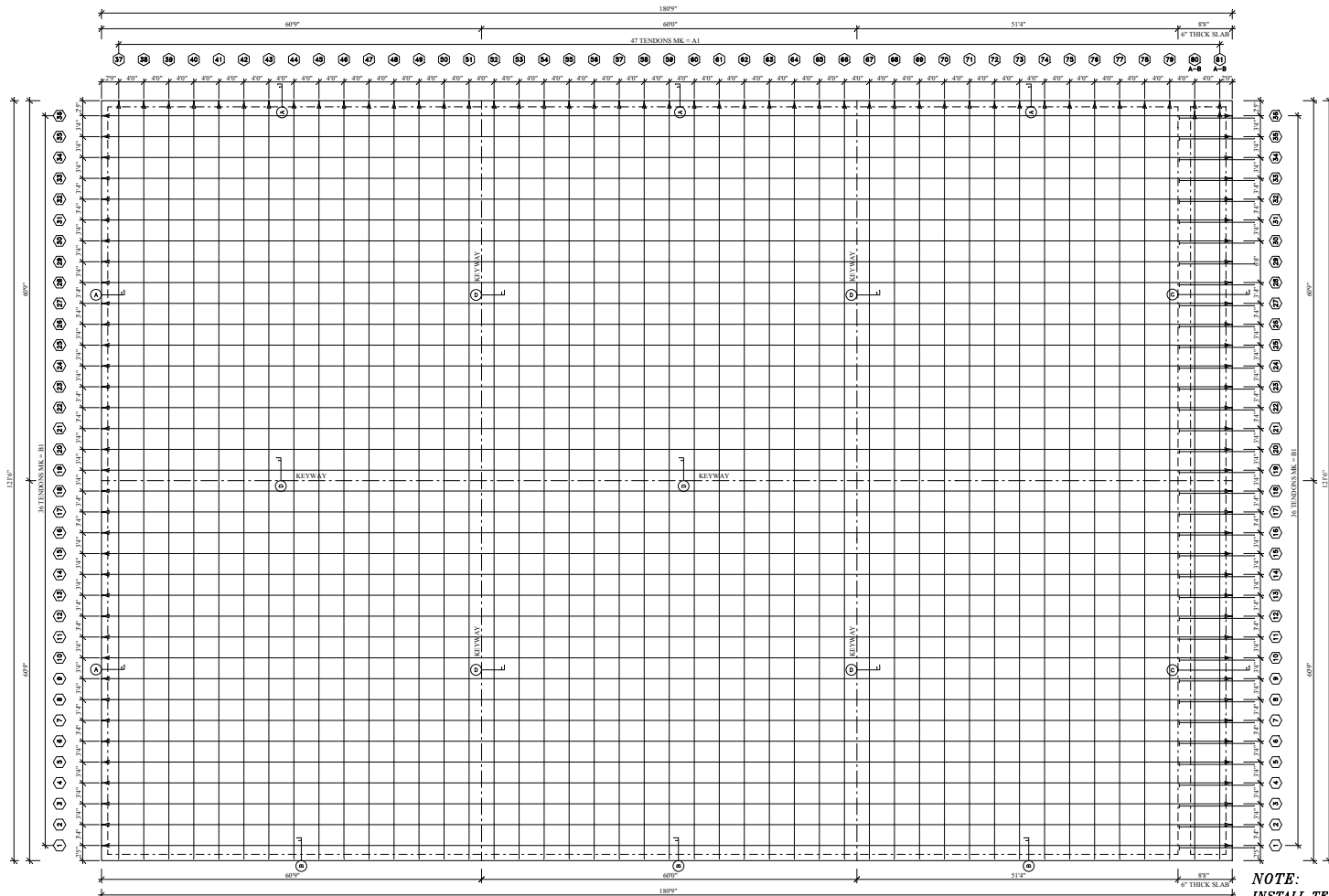
6" MIN. WIDTH TRENCH DRAIN
12' RECOMMENDED MIN. BETWEEN
DRAIN AND SIDE LINE OF COURTS.

HP - HIGH POINT

TYPICAL DRAINAGE PATTERNS FOR MULTIPLE TENNIS COURTS

NOT TO SCALE 1" (inch) = 25.4mm 1' (foot) = 305mm

NOTE: Tennis Court Construction Contractor should furnish a stamped engineered design drawing for the Post Tension Slab.



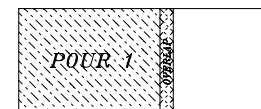
THIS SLAB REQUIRES A PARTIAL STRESS 18 TO 24 HOURS AFTER CONCRETE PLACEMENT. CONTRACTOR TO COORDINATE.

POUR 1
P.T. SLAB AREA = 21,961.13 sq. ft.
DO NOT USE THIS PLAN TO SET FORMS!

NOTE:
SEE SHEET PT-2 FOR DETAILS
AND SLAB SPECIFICATIONS

POST TENSIONING MATERIALS LIST											
TENDON NO.	NO. TENDONS	STRUCTURAL LENGTH	JOINT TENDONS	TOTAL TENDON LENGTH	LAST END ANCHOR	ANCHOR (FOOT RUN)	BOARDED BLOWDOWN (INCHES)	FORCE (KIP)	WIRE (KIP)	WIRE (KIP)	COLE
D1	47	131'0"	25"	132'0"	47	0	47	9	15.3/8	15.3/8	BLU
D2	36	180'0"	43"	180'0"	72	0	0	12.3/8	12.3/8	BLU	GREEN
D3	36	POUR 2	POUR 2	131'0"	0	0	44	POUR 2	POUR 2	POUR 2	YELLOW

NOTE:
INSTALL TENDONS D1 FOR POUR 2 IN POUR 1
DO NOT STRESS THESE TENDONS.



KEYPLAN

THIS PLAN IS ONLY VALID ONE YEAR FROM DATE ON PLAN

ACADIAN STRUCTURAL SOLUTIONS, INC.
57502 ALLEN RD, SLIDELL, LA 70461
PHONE (985) 641-5794 FAX (985) 641-1239
PLANS@ACADIANSS.COM

YOUNGSHVILLE SPORTS COMPLEX
YOUNGSHVILLE, LOUISIANA
QUALITY COURT INDUSTRIES
BATON ROUGE, LOUISIANA

SCALE: 1/8" = 1'-0"
DATE: 25-MAR-13
DRAWN BY: JPH
CHECKED BY: JPH
APP. PROJECT #: 300-13

DATE: _____ REVISIONS: _____

SHEET
PT-1
OF
PT-2

Do I need a licensed tennis court or track builder?

- **Yes! A licensed professional tennis court builder will employ all of the latest technologies and will be current with all the rules and regulations for new construction of tennis courts.**
- **Having a professional tennis court builder will ensure that none of the minor details are left out.**
- **Certifications from professional organizations like USTA, USPTA, ASBA, and Certified Tennis Court Builder are also important factors in choosing a builder.**

How long does it take to build a new court?

- The average time it takes to build and surface a single court is about 60 days, weather permitting.
- It generally takes only a couple of weeks to get the court built with fencing and lighting.
- **NOTE:** After the slab is poured, the concrete must cure for a period of 30 days before any surfacing material can be applied. Surfacing usually takes about a week.

How much does it cost to resurface a court?

- **The average cost to resurface a tennis court is between \$12,000 and \$18,000.**
- **However, not all tennis courts are the same, so each court should be inspected to determine what steps should be taken to correctly resurface the court(s).**

How much does it cost to resurface a court?

Answers to these questions will influence the resurfacing costs:

- 1. How old is the surface? Is the paint delaminating or worn down to the concrete or asphalt? If the paint is delaminating it will need to be stripped, which may create additional costs. If the paint is worn down to the base, then the base will need to be primed before applying new surfacing materials.**
- 2. Are there cracks in the surface? How many linear feet of cracks? The amount of materials and the time it requires to patch all cracks will influence the price.**
- 3. How many low spots, or “bird baths,” does your court have? The amount of patchwork on your court will influence the price.**

How much does it cost to resurface a court?

4. How rough is the existing surface? This will determine how many coats of surfacing material will be needed to achieve your desired look and play. The number of coats of surfacing material will influence the price.
5. What color choices do you prefer? The final colors and color combinations can influence the price.
6. What accessories need replacing? Nets, net posts, center anchors, windscreens, and other accessories will affect your price.
7. Are there old, rotten expansion joints that need replacing and filling? Again, your budget will also determine which of these should take priority, and what options you can choose.

How long should my new court surface last?

- **Your court surface should last about 8-10 years depending on the amount of use.**
- **Courts that have constant use, such as public parks and recreational facilities will normally get between 5-7 years of life.**

How do I clean and maintain a tennis court?

- **Light pressure washing is best.**
- **Don't use harsh chemicals.**
- **Do not get too close or use high pressure when washing due to the risk of damage to your surface.**
- **Be sure to keep vegetation away from the fence line and keep all trees trimmed away from court area. Trees and shrubs will decrease the amount of sunlight on your court, which will increase the risk of growing algae, not to mention stains from leaves. Tree limbs can also fall and damage fencing, lighting, and the surface.**



















Any Questions?

Mike Stewart

5661 Brownfields Drive
Baton Rouge, LA 70811

Toll-free: 855-774-9974

info@qualitycourt.com

www.qualitycourt.com

